

## Operating instructions

### Advantages of this unit

Improve surface marking quality with a better application of the micro-beads on the line.

### How?

By means of a quick, easy and precise measurement carried out in a single operation during application in order to obtain :

- appropriate dosing of beads,
- transversal dispersion of beads over the entire line.

### Presentation of the unit (patented)<sup>1</sup>

The unit is composed of a plate with longitudinal grooves.

The end of the plate is equipped with a number of transparent openings to allow viewing of the dosage value for each opening. This system offers a representative sample of the entire line marking width.

The overall dimensions are:

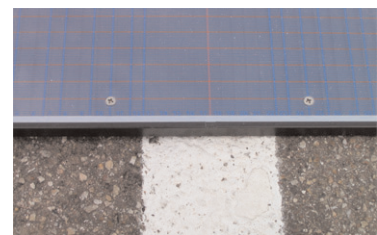
1.25 m long, 0.40 m wide (or 0.25 m) and 15 mm thick.

Unit weight 5 kg. The unit is robust and requires no maintenance.

### Procedure

1/ The unit is placed **in the axis** of the line to be treated.

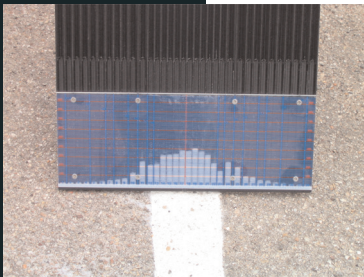
Notches in the top section of the unit and grading lines in the bottom section enable accurate centring of the unit over the line.



2/ The micro-beads are applied without spraying the paint and in the direction of the graded window<sup>2</sup> towards the lever. For easy reproduction of this operation, it is preferable to fit a shut-off valve on the paint pistol supply line.



3/ The operator lifts the plate slowly until it is vertical to allow the beads to flow into the openings.



4/ The operator may then read the grading :

- Each grading [ blue ] corresponds to a dosing of  $10 \text{ g/m}^2$
- Each grading [ red ] corresponds to a dosing of  $100 \text{ g/m}^2$
- The unit enables measurement of bead dosing between 10 and  $1000 \text{ g/m}^2$
- The unit is supplied as standard with glazing suitable for use with all standard micro-beads available on the market :  
125/630, 100/400 à 1000/1200 average apparent density retained :  $1,54 \text{ g/cm}^3$

#### ADVANTAGES

- Easy to use
  - on all marking systems (paint, thermo-plastic, coating box)
  - a single passage of the machine is enough (with shut-off of the paint spray only)
  - all beads are counted
  - the dosage is read directly without calculation
  - no weighing
  - no preparation before measurement
  - insensitive to wind
  - no electrical connections
- Greater precision
  - the measurement reference length is 1 metre over the entire line width
  - no risk of weighing errors
- Improved marking quality
  - transversal indication of bead dispersion over the line enables fine adjustment, monitoring of useful dosing volume over the line width and correct dosing of the global consumption.
  - the values may be recorded for each model and saved as an application reference.
  - the dosage may be checked at any time during application with only minimum disturbance.

## VISIBILLES bead dosage monitoring unit

### - Ecology

- no plastic waste covered in paint
- no cleaning with or use of solvents

### UNIT MAINTENANCE

Turn the unit upside down after each use to remove all remaining glass beads. Recover these beads to avoid all risk of accidents.

Always store the unit in its protection case after use.

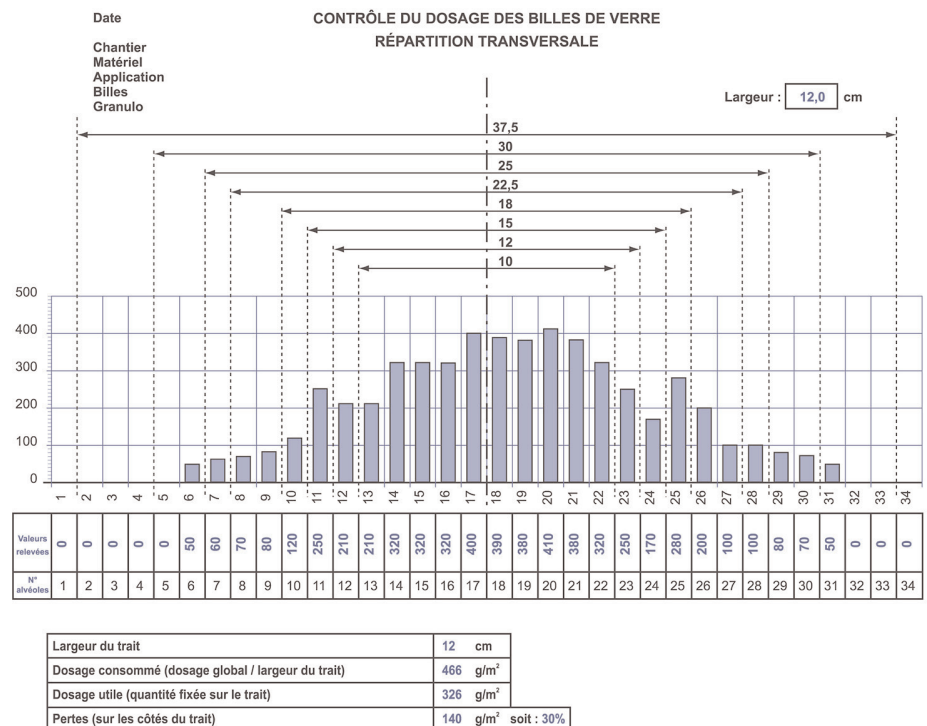
The unit may suffer distortion unless placed correctly on a flat surface for long periods of time, but will return to its original form as soon as it is placed on a flat support.

Always clean the unit grooves with a dry and clean hand brush before and after use.

The unit is affected by humidity during application and must not be used with wet or soiled beads. If the unit has been exposed to water, always dry it before use. If paint is sprayed onto the unit, clean it immediately with solvent.

### USE OF THE GRAPHIC MODEL

- open the file "22- or 34-hole dosing monitoring model<sup>3</sup>" depending on the model of the unit used



## VISIBILLES

### bead dosage monitoring unit

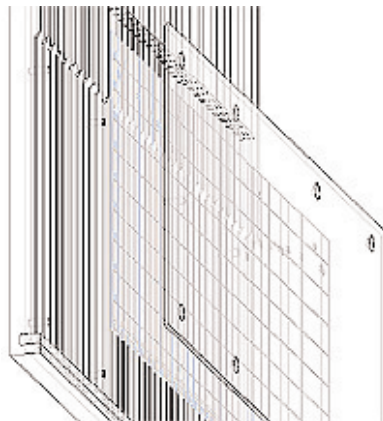
- fill the boxes surrounded with a double line :
  - line width
  - enter the values read for each hole including the value 0
- the calculations are then carried out automatically
- it is possible to pick and paste the values entered, in order to realign the pistol for example, without having to carry out new measurements.

#### TROUBLE-SHOOTING

- The bead pistol is not aligned with the paint pistol
- The fishtail is soiled with dry paint droplets
- The fishtail is worn in the center section
- The useful dosage is not attained due to high loss of beads
- The transversal dispersion is not uniform
- The fishtail is tilted

#### SPARE PARTS

All parts used in the construction of the unit may be purchased separately at the valid spare parts price with the exception of the base plate which is only sold with the complete unit.



	<b>width 400</b>	<b>width 250</b>
screen-marked ruler	21212900	21213000
transparent screen	21212800	21910901
baguette	21212801	212108
PVC box	21214100	21214200

<sup>1</sup> patents n°EP 02366009.5 ; 2 827 881 ; 2 827 882

<sup>2</sup> Depending on the bead pistol position on the machine, and to avoid turbulence when the micro-beads arrive on the plate, the user should apply the beads in the direction of the window towards the unit lever.

<sup>3</sup> At present 2 units with working width 25 and 40 cm are available.